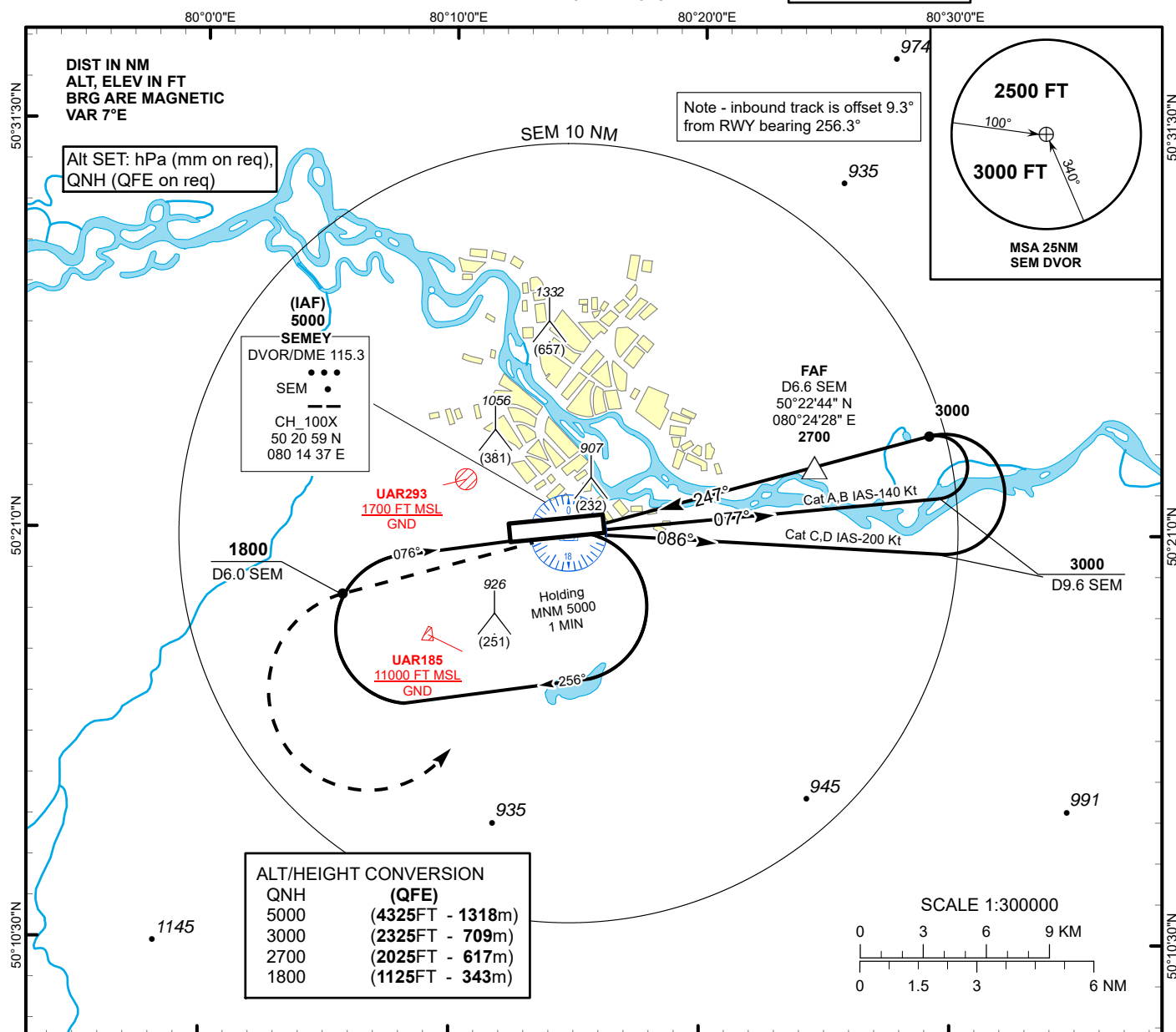
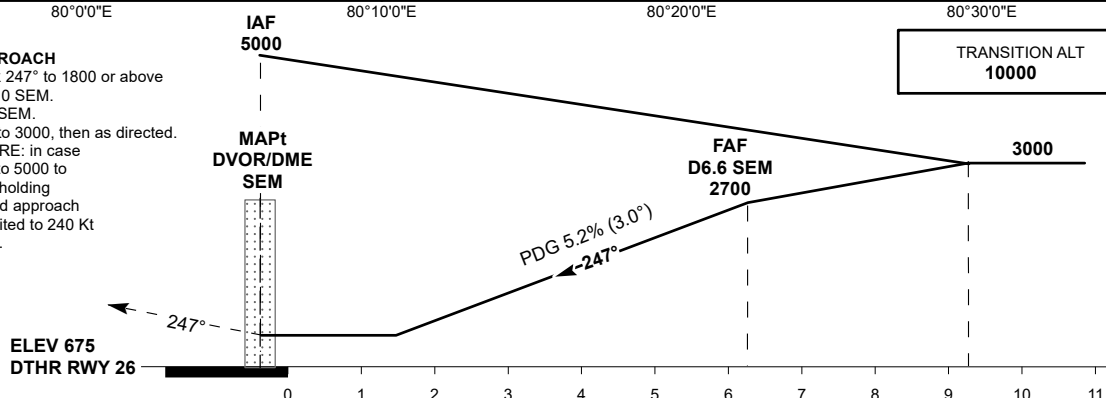


INSTRUMENT
APPROACH
CHART - ICAOAERODROME ELEV 759 FT
HEIGHTS RELATED TO
DTHR RWY 26 ELEV 675 FTSEMEY TOWER 128.0
SEMEY ATIS (EN) 118.5
SEMEY ATIS (RU) 122.4SEMEY
VOR/DME
RWY 26

MISSED APPROACH

Climb on track 247° to 1800 or above
outbound to 6.0 SEM.
Turn LEFT to SEM.
Climb initially to 3000, then as directed.
RADIO FAILURE: in case
of RCF climb to 5000 to
SEM and join holding
pattern. Missed approach
turn speed limited to 240 Kt
IAS maximum.



Aircraft Category		A	B	C	D	DIST to DTHR	NM	1.0	2.0	3.0	4.0	5.0	6.3
Straight-in Approach OCA/H						DME SEM	NM	1.3	2.3	3.3	4.3	5.3	6.6
	VOR/DME	1090(420)		1130(450)		ALTITUDE	FT	1043	1361	1679	1998	2316	2700
						HEIGHT	FT	(368)	(686)	(1004)	(1323)	(1641)	(2025)

Aerodrome Operating Minima (MDH ft x RVR(CMV))	VOR/DME				GS	Kt	80	100	120	140	160	180
					FAF-MAPt (6.6)	min:sec	4:57	3:58	3:18	2:50	2:29	2:11
					Desc.Rate(5.2%)	ft/min	425	530	630	740	840	950

SEMEY (UASS)
VOR/DME RWY26

AERONAUTICAL DATA TABULATION

VOR/DME approach to RWY26 from SEM DVOR/DME	
Fix/point	Coordinates
SEM DVOR/DME (IAF)	50° 20' 58.7"N 080° 14' 37.5"E
(FAF) D6.6 SEM	50° 22' 43.7"N 080° 24' 27.7"E
DTHR RWY 26	50° 21' 10.52"N 080° 15' 00.79"E
Final approach descent angle is 3°	